

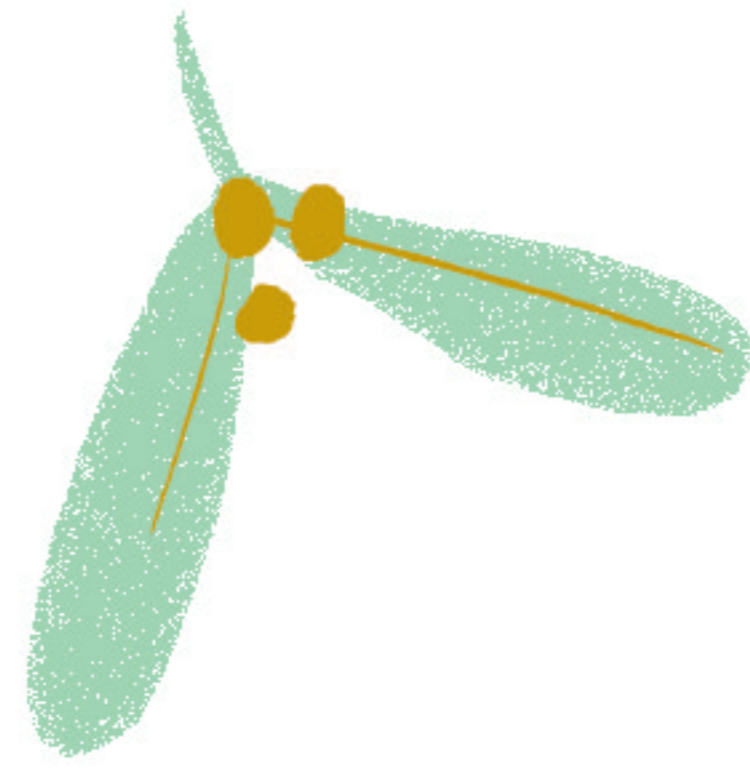
Meri Meri
CHRISTMAS CHARADES



Santa



Ice Skating



Mistletoe



Reindeer



Elf



Writing a letter to Santa



Candy Cane



Choosing a Tree



Snowflake



Building a Snowman



Decorating a Christmas Tree



Angel



Christmas Star



Little Drummer Boy



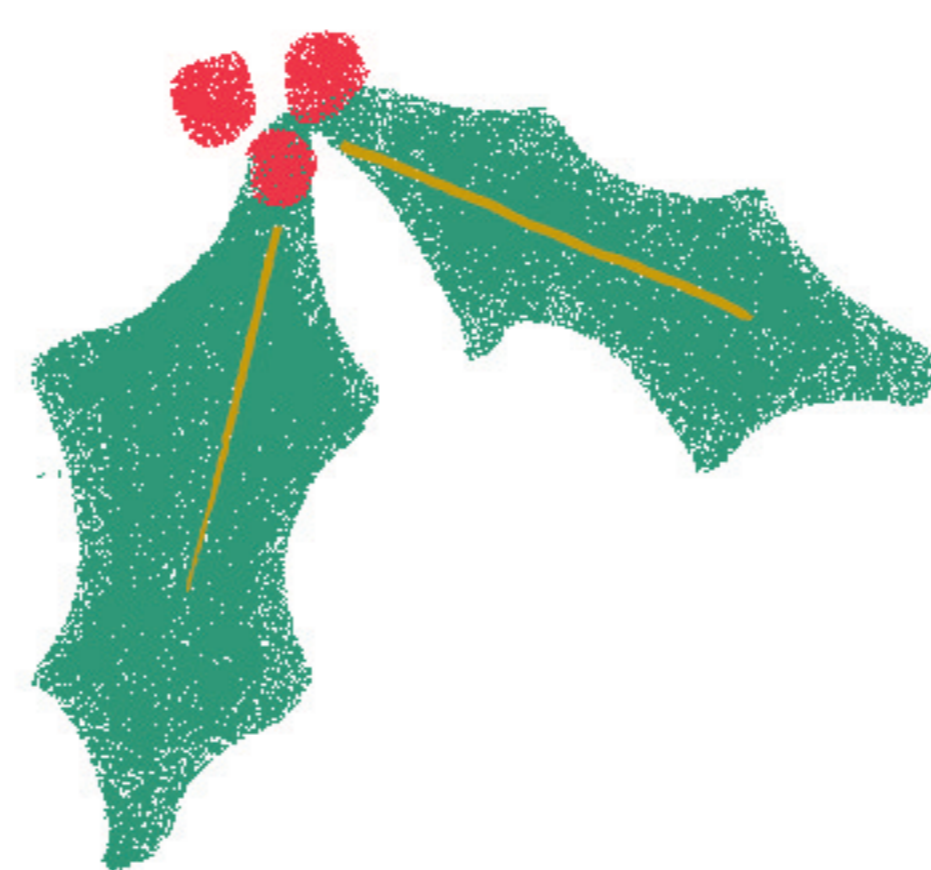
Making a Gingerbread House



Baking Gingerbread Men



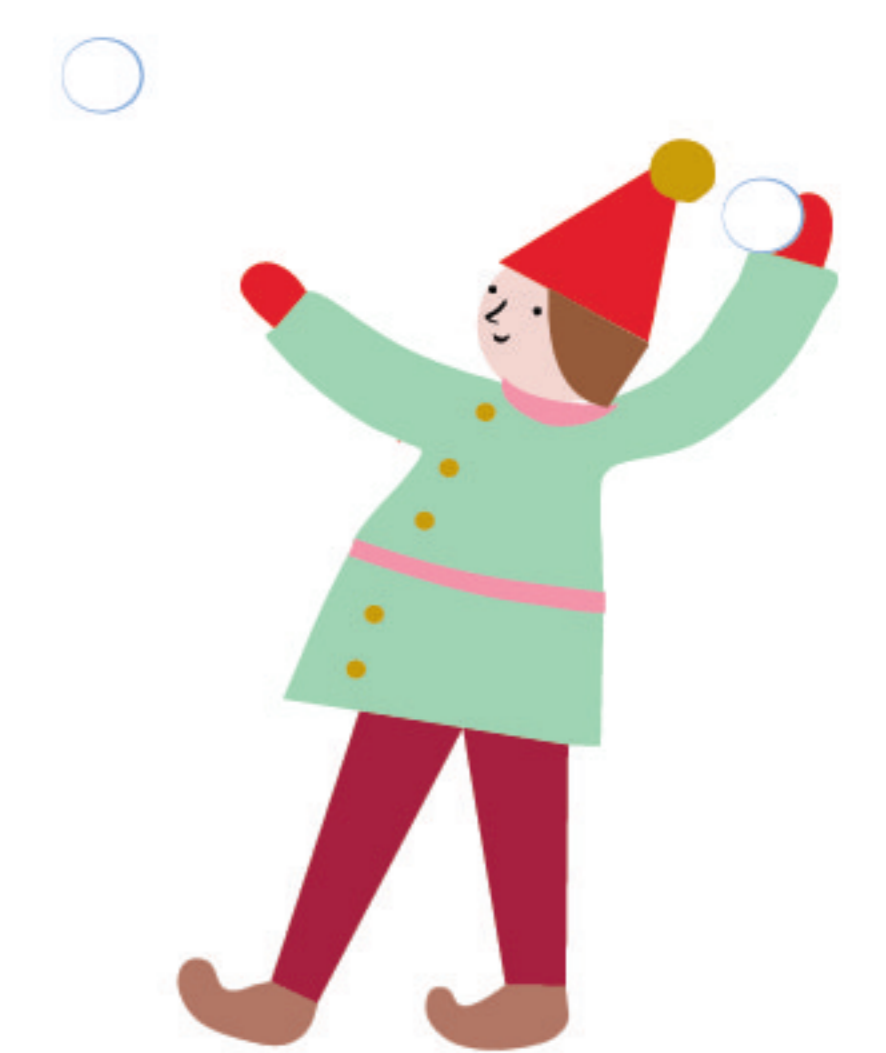
Wrapping presents



Holly



Sleigh



Snowball fight



Hanging a Stocking



Sledging



Sugar Plum Fairy



Drinking a Hot Chocolate



Wreath

Cut out the charades cards, fold them in half and place in a bowl or hat. The first player draws a card and acts out the word or phrase without speaking, lip movements or pointing at objects. Whoever guesses the charade wins, and becomes the next actor.

Christmas Memory Game

Print two sets, cut along the lines to make 24 cards, mix them together and lay them face down in a grid ready to start the game.

