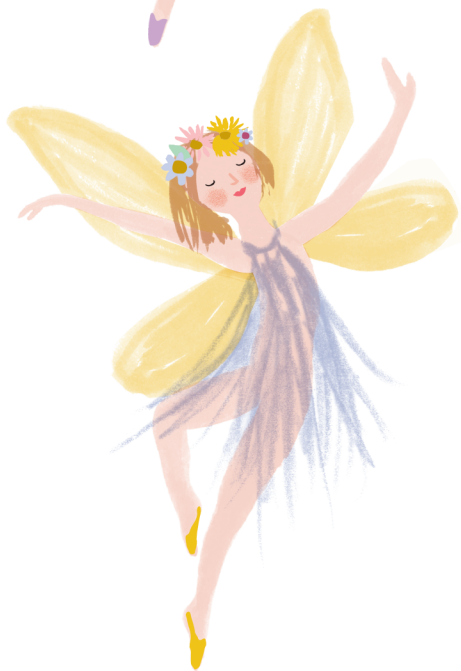


# Fairies



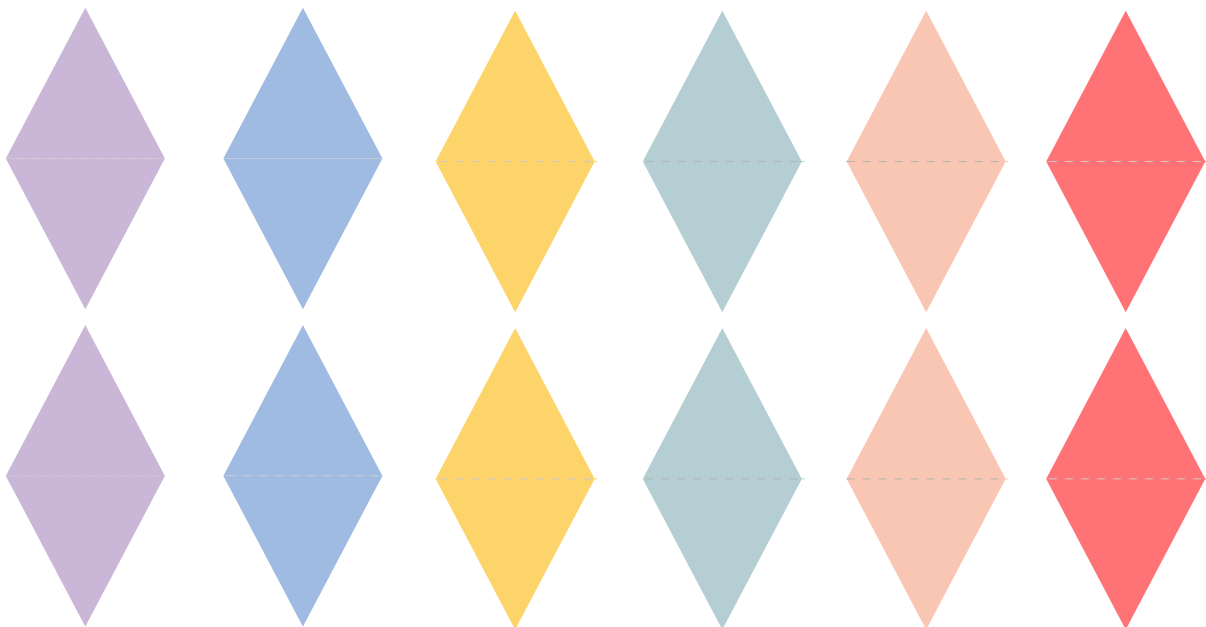
Carefully cut around the fairies and attach a skewer or cocktail stick to the back with sticky tape.

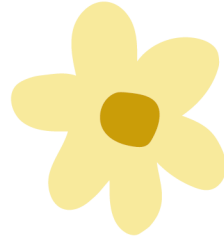




## Bunting

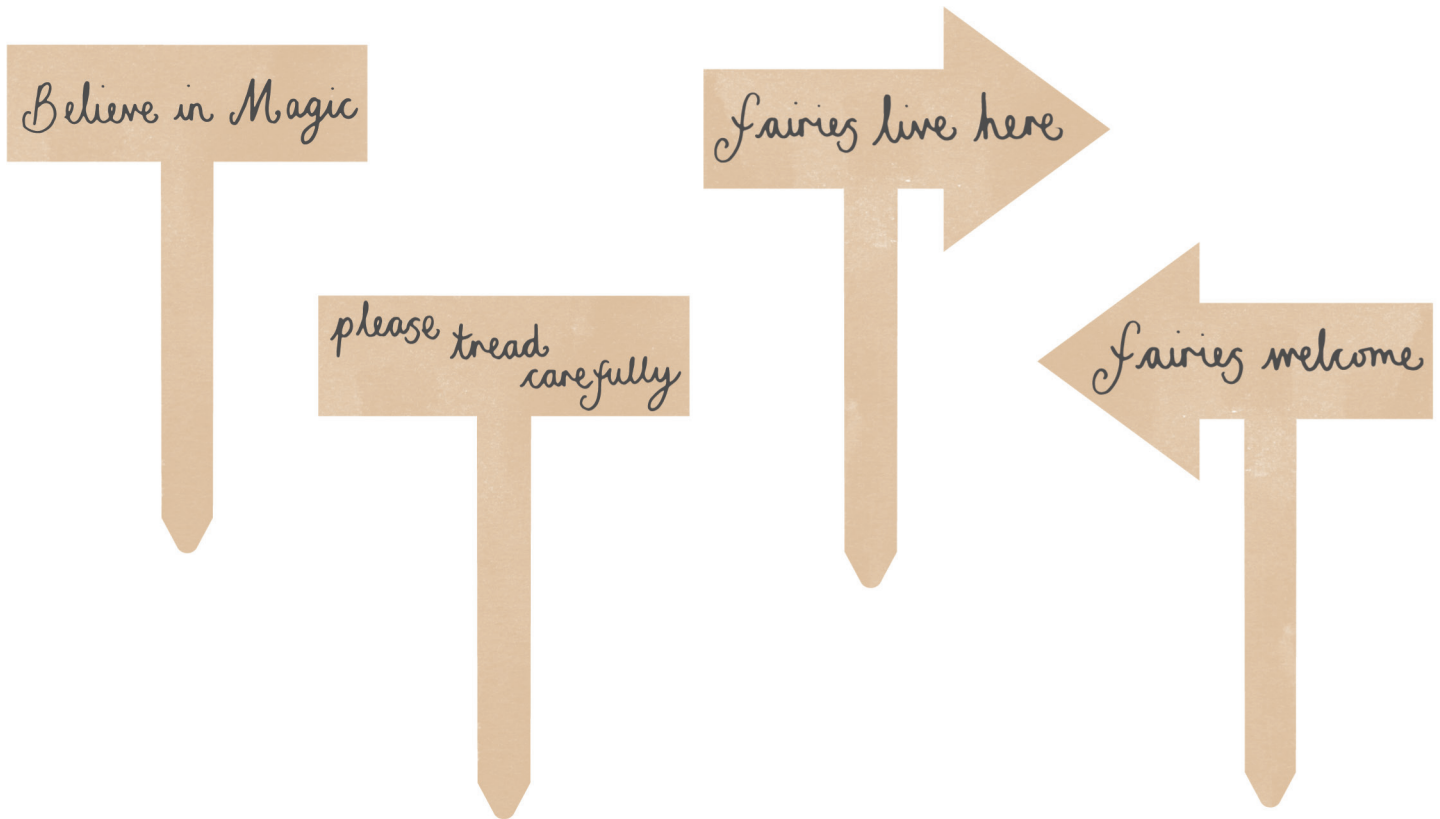
Cut out the triangles, fold in half and stick along some thread or ribbon.



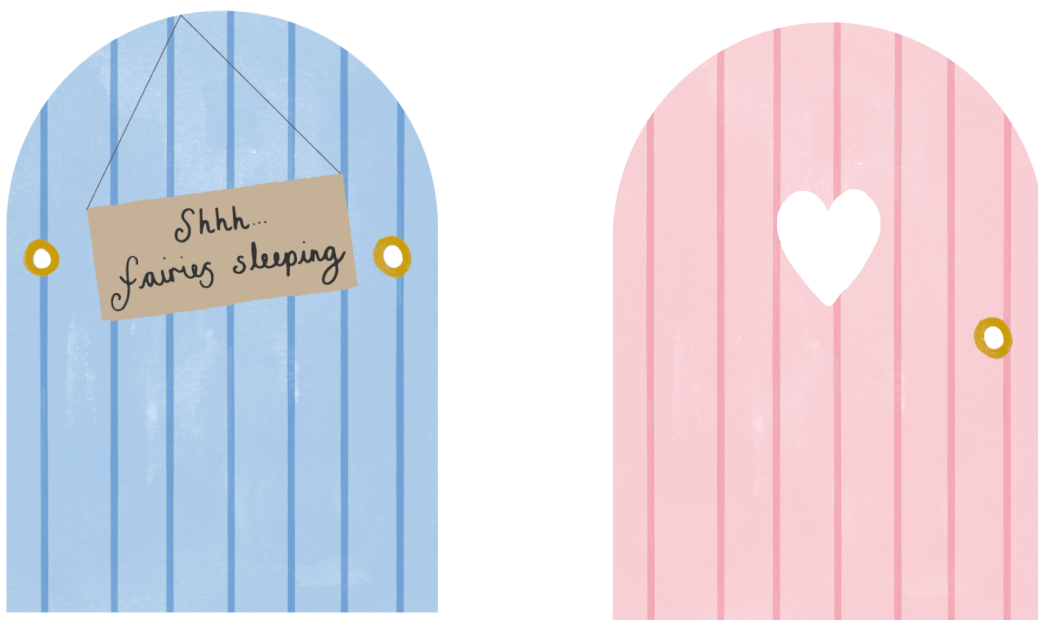


# Fairy Signs

Attach a cocktail stick to the back with sticy tape.



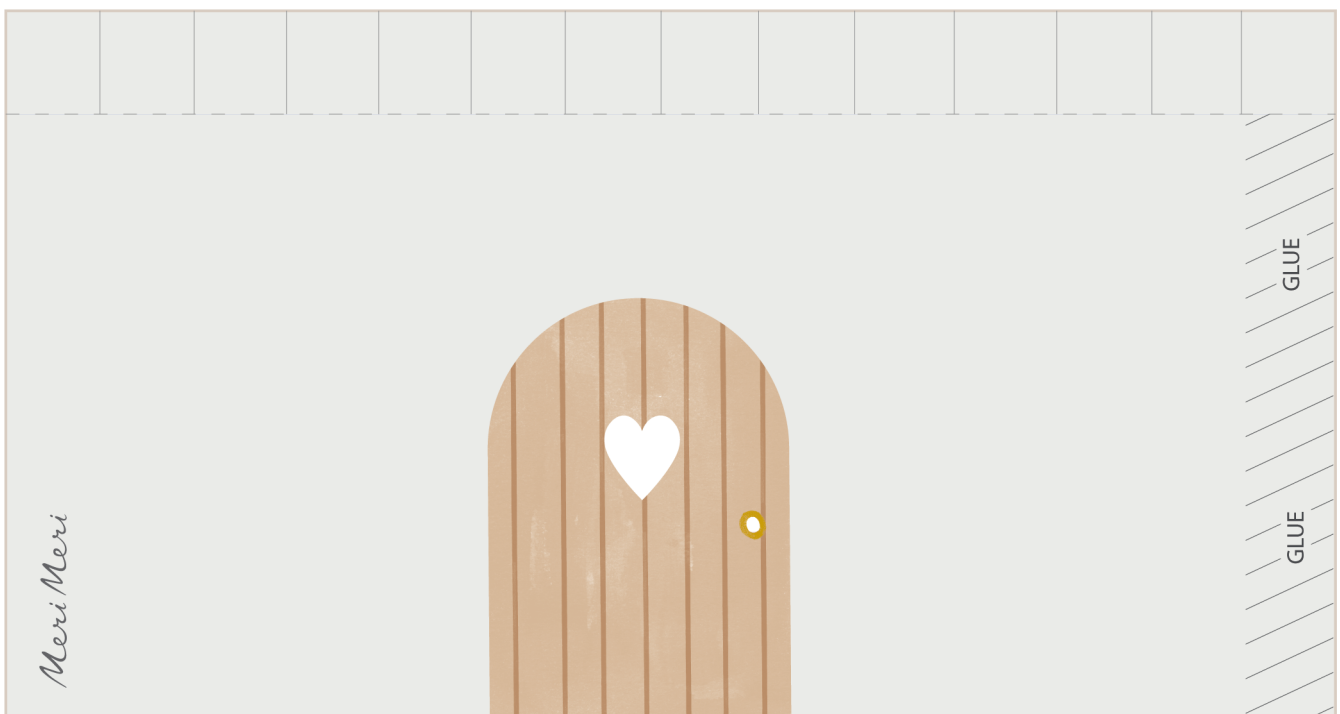
Place a fairy door by a tree if you are creating a fairy garden outside.



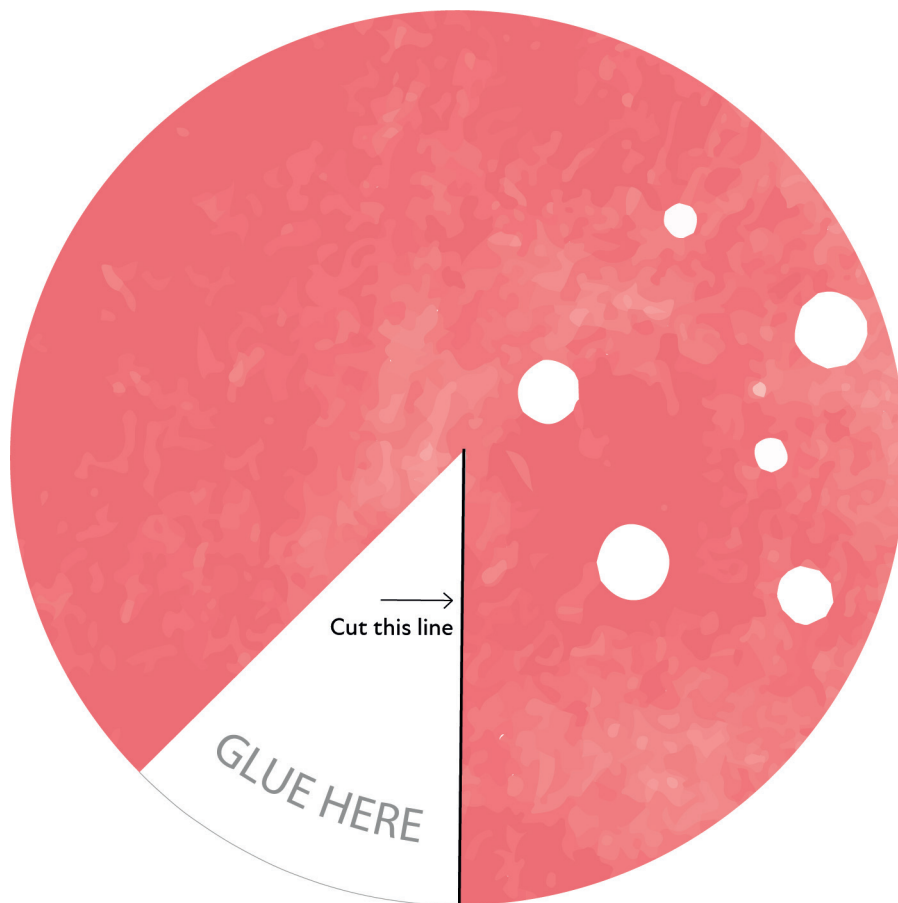
# Fairy House



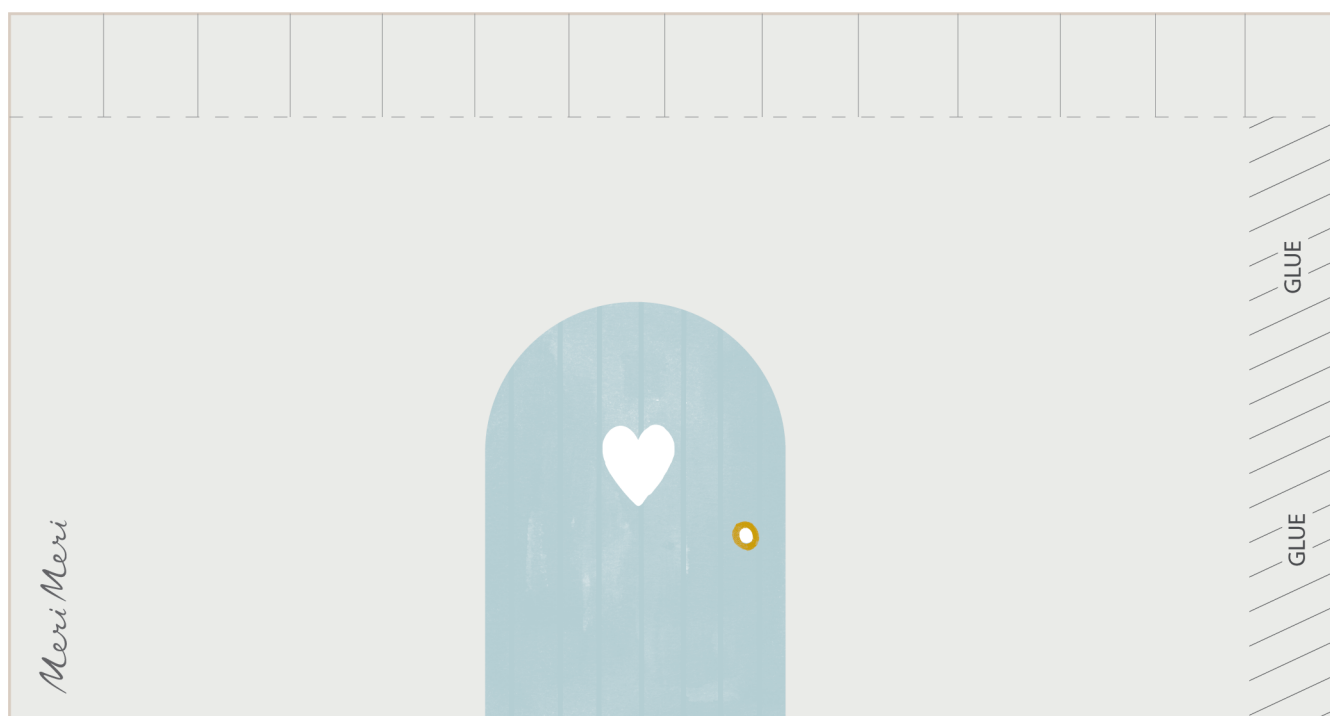
Fold the dashed line and cut the vertical lines. Glue behind the tabs and attach the roof.



# Fairy House



Fold the dashed line and cut the vertical lines. Glue behind the tabs and attach the roof.



Meri Meri



Meri Meri

© Meri Meri 2023 Copyright protected. For personal use only, these designs belong to Meri Meri and must not be used for any other purpose.